

NCH Visual Guide

Symphony Shorts - Discover Romeo and Juliet

Sunday 5th October, 2025

This is a visual guide for people coming to the National Concert Hall (NCH). It will tell you how to get to the NCH and what you can find. This is a working document, so please let us know if there is something you would like us to include.

If any of this is confusing or you want us to include additional information in this document, you can email our box office team at info@nch.ie, and they can answer any questions you have about the building.

1. [Getting here](#)
2. [When you arrive](#)
3. [Bathrooms](#)
4. [Going into the concert](#)
5. [Symphony Shorts: Discover Romeo and Juliet](#)



Welcome to the National Concert Hall. Lots of different music events happen here.

There are 5 steps up, and a ramp to access the building.

Getting Here:

We are located on Earlsfort Terrace in the heart of Dublin's City Centre. There are many convenient ways to get here throughout the week and over the weekend.

[View our Location on Google Maps](#)

Dublin Bus	<p><u>Number 44</u> (from DCU to Enniskerry); and <u>number 61</u> (from Eden Quay to Whitechurch) all stop on Earlsfort Terrace, directly outside the NCH.</p> <p><u>Number 46a</u> (From Phoenix Park to Dun Laoghaire) stops on Leeson Street, beside Earlsfort Terrace.</p>
Luas	<p><u>Take the Luas</u> to Harcourt, and make your way to Earlsfort Terrace via Hatch Street.</p>
The Scenic Route	<p>If you're coming to an afternoon concert, popping into us for lunch or just visiting during the day, why not take a stroll through the beautiful Iveagh Gardens, located just off Harcourt Street. You can access the NCH through an exit just a few minutes from the Clonmel Street entrance. The exit is located beside the statue of tenor John McCormack.</p>
DART	<p>Our nearest DART station is Pearse Station.</p>

When you arrive:



Come through our front doors into our main foyer space.



Just inside the main doors. There might be lots of people and lots of noise in the foyer.



When you turn to your right you will see our Café.

You can buy food and drinks here.
There might be lots of people and lots of noise.



If you look to your left, you will see our box office.

The people here will print off your tickets if you don't have them on your phone/tablet but also can tell you about any up-coming concerts you are interested in or would like to book for.



Beside the box office there is a small bar. You can buy food and drinks here.



Through these doors you will find some additional seating and our Coffee Dock. You can buy food and drinks here. There might be lots of people and lots of noise.

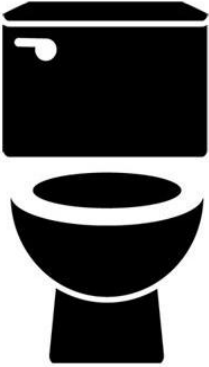

There will also be a tent with some cushions in here if you need a quiet space. If you need a quieter space, please ask anybody in uniform and they will direct you to one.



Our staff have a few different uniforms, and sometimes they wear masks.

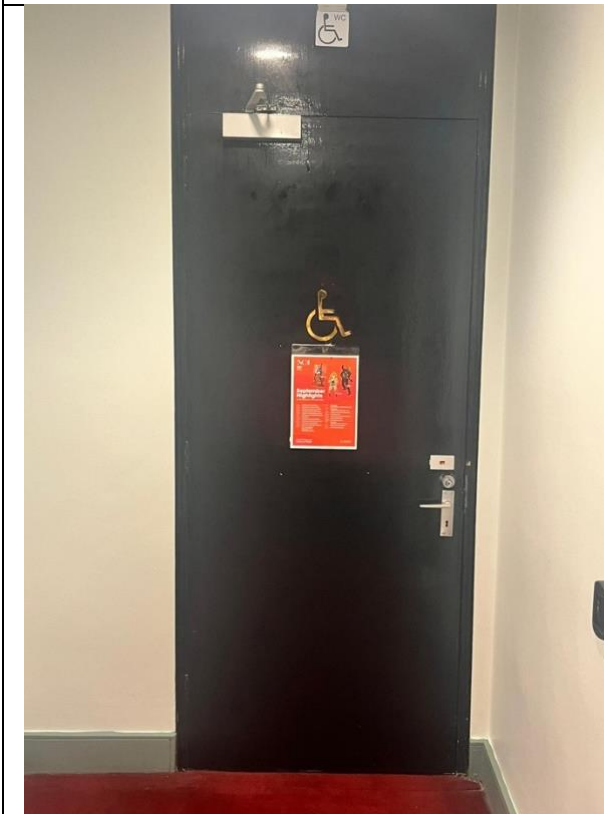
If you have any questions, please find anybody in one of these uniforms and they will help you.

Bathrooms:

Bathrooms on the ground floor	
	<p>On the ground floor there are men's, women's and gender-neutral accessible toilets.</p>
	<p>These toilets can be found beside the box office.</p>



This is the men's toilets on the ground floor.



This is the accessible toilet by the men's toilet



This is the women's toilet – there is a second women's bathroom at the back of the photograph.



There is also a second universal access bathroom in this area.



This is the larger universal access bathroom.

Bathrooms upstairs off the mezzanine & upper balcony



This is the door to the women's toilets on the upper balcony.



This is the mezzanine for the Green balcony seating.

There are male toilets through the door on the right beside the steps.

Going into the concert:



These are the doors to the Main Auditorium.

When it is time to take your seat, our ushers will scan your tickets.

There will be announcements made when it is time to take your seats.

To make sure everybody's tickets are scanned, sometimes there is a queue.



This is the space between the doors into the Main Auditorium and the space itself.

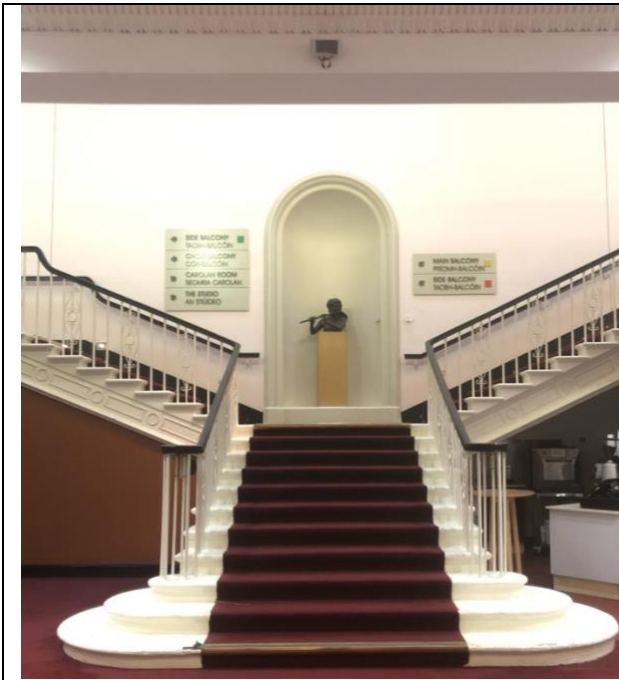


This is the view of the stage from the back of the seating downstairs



This is what the seats look like.

For this concert you can sit anywhere downstairs.



These are the stairs in the John Field Room. They bring you up to our balcony seating.



For our Main Yellow Balcony and Red Side Balcony seating you go up the stairs and turn right.

For our Green Side Balcony seating you go up the stairs and turn left.



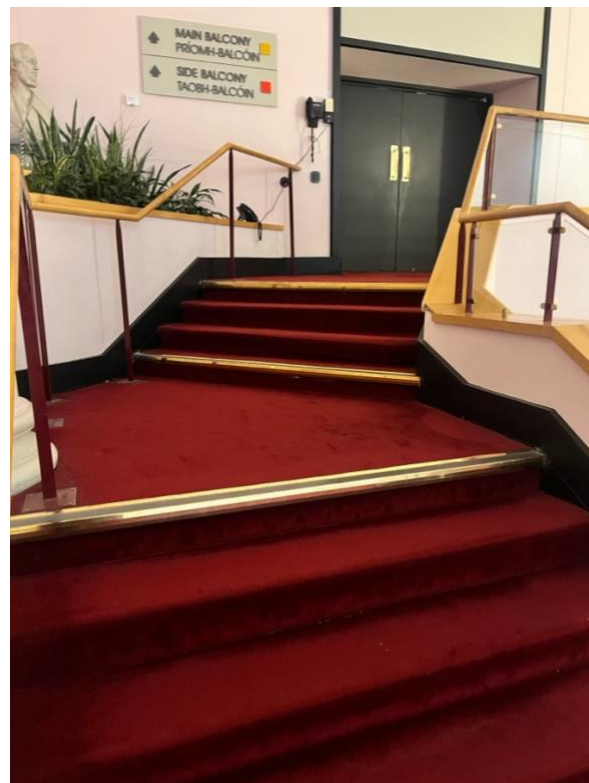
This is what the upper balcony foyer space looks like.

There are women's toilet at the far side of the chandelier.

There is some seating here.

There will be a tent with some cushions here if you need a quiet space. If you need a quieter space, please ask anybody in uniform and they will direct you to one.

There are women's toilets in the far-left corner of the upper balcony.

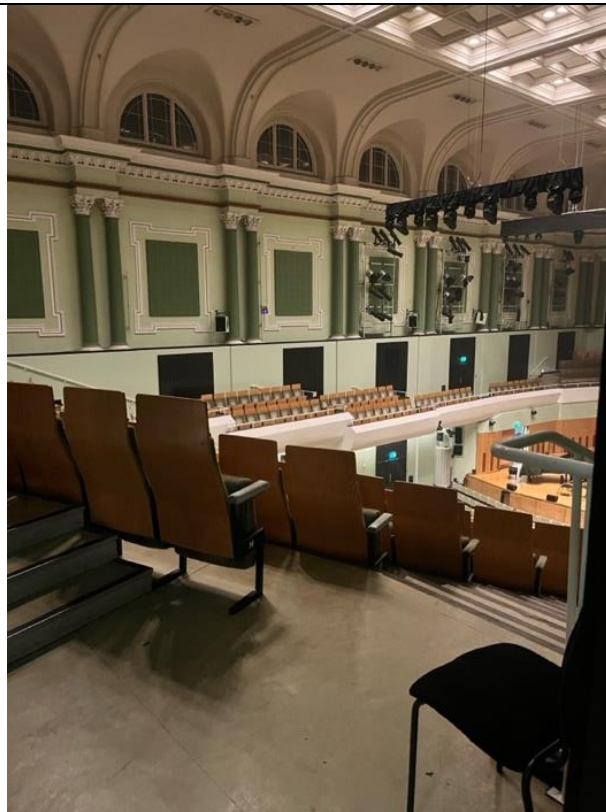


These are the steps to the main entrance of the balconies.

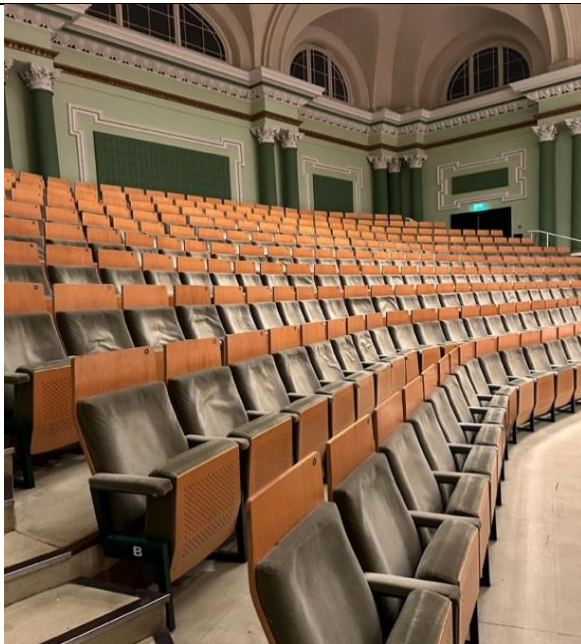
When it is time to take your seat, our ushers will scan your tickets.

There will be announcements made when it is time to take your seats.

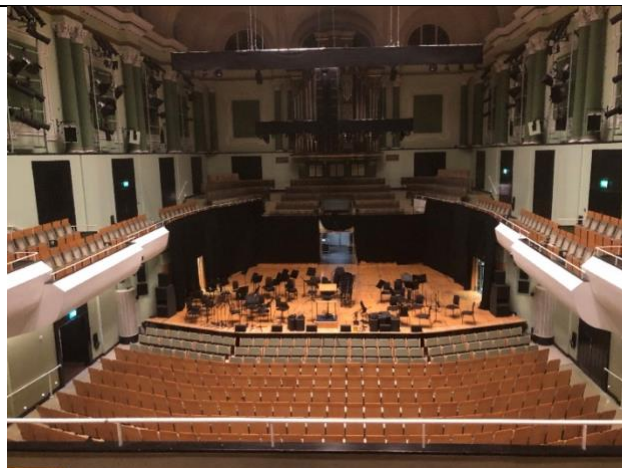
To make sure everybody's tickets are scanned, sometimes there is a queue.



This is what the auditorium looks like when you come through the door.



These are the Main Yellow Balcony seat rows, there are steps down to each row.



This is the view from the Main Yellow Balcony seating.

Symphony Shorts: Discover Romeo and Juliet



Today's performance includes Irish Sign Language (ISL) interpretation



This is Jessie, she is the presenter for our concert today.



This is Gavin Maloney, and he is the conductor.