

NCH

NATIONAL
CONCERT
HALL \ AN
CEOLÁRAS
NÁISIÚNTA

Visual Guide – **This Way to Christmas**



nch.ie



VISUAL GUIDE – THIS WAY TO CHRISTMAS

This Visual Guide contains information that may help you to plan your visit to the National Concert Hall (NCH). If you have other questions in relation to your visit, you can contact **info@nch.ie** or **01 417 0000**

You can find more information relating to Access Requirements on the NCH website **www.nch.ie**.



WELCOME TO THE NATIONAL CONCERT HALL

Getting Here:

The National Concert Hall is located on Earlsfort Terrace in Dublin City Centre.

[View our Location on Google Maps](#)



You can get here by public transport:



DUBLIN BUS

Number 44 (from DCU to Enniskerry); and **number 61** (from Eden Quay to Whitechurch) all stop on **Earlsfort Terrace**, directly outside the NCH.

Number 46a (From Phoenix Park to Dun Laoghaire) stops on **Leeson Street**, close to **Earlsfort Terrace**.



LUAS

Take the Luas to **Harcourt**, and make your way to **Earlsfort Terrace** via **Hatch Street**.



DART

The closest Dart station is **Pearse Street**.



YOU CAN ALSO GET HERE BY CAR

If you are driving, there is very limited parking in the grounds of the National Concert Hall.

There are also a number of car parks close to the Concert Hall.

- **The Royal College of Surgeons Car Park**
- **Dawson Street Car Park**
- **Schoolhouse Lane**
- **Drury Street Car Park**
- **Park Rite Car Park**
- **St Stephen's Green Car Park**
- **Setanta Place**

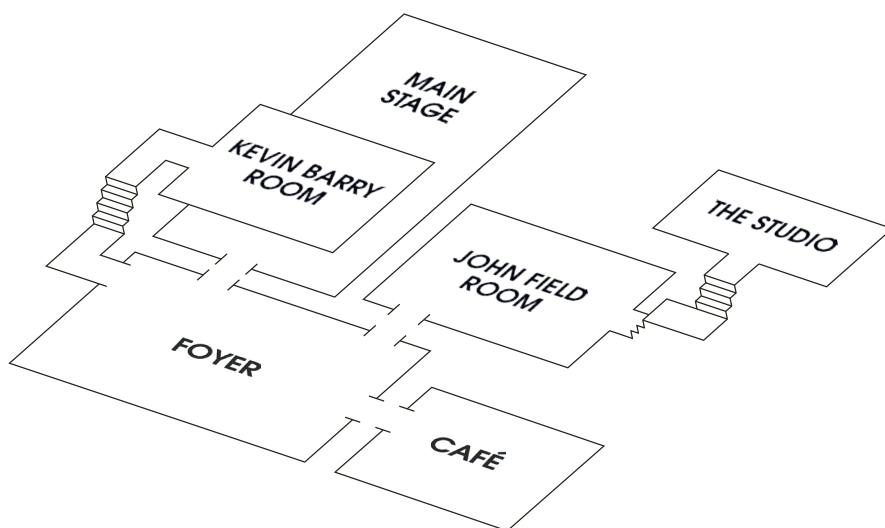
You may be able to find on street parking along **Adelaide Road**, **Hatch Street**, **Fitzwilliam Square** and **St Stephen's Green**.

Please check for parking restrictions and notices for Pay & Display areas.

It's good to note that at this time of year, the city centre can be busy with shoppers, so we would advise you to allow a little extra time so that you can find parking and get to the venue in time for the performance.

Let's take a look around...

GROUND FLOOR



This is where you will enter the building.
There are some steps and a ramp.



When you enter the building you will be in the foyer. This area can be quite busy and noisy.
There will be some Christmas decorations and a Christmas tree.



This is the **box office**. You can collect or purchase tickets here.



This is the **Information Desk**. If you have questions or need assistance, staff at this desk should be able to help.



This is **The Terrace Restaurant**. Food and beverages are served here, and it is possible to reserve tables. You can visit the NCH website to find out more about the restaurant and make a reservation. The Terrace will be decorated for Christmas.

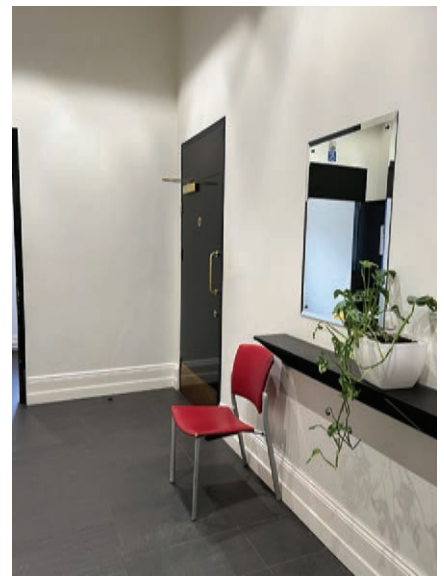
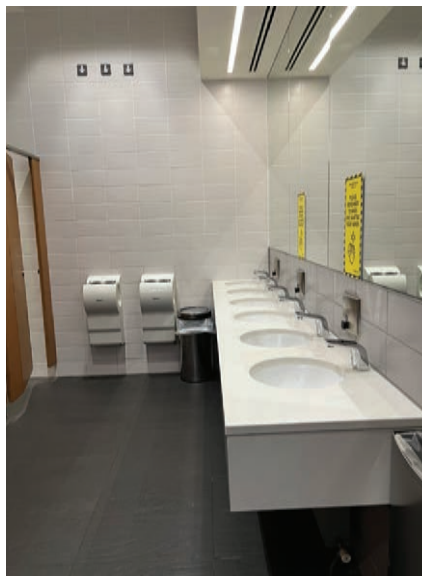




This is **The Foyer Bar**. It is closed in this picture, but it will be open during your visit. You can purchase snacks, as well as hot and cold drinks here. There may be a queue.

On the ground floor there are women's toilets, men's toilets and two accessible toilets.

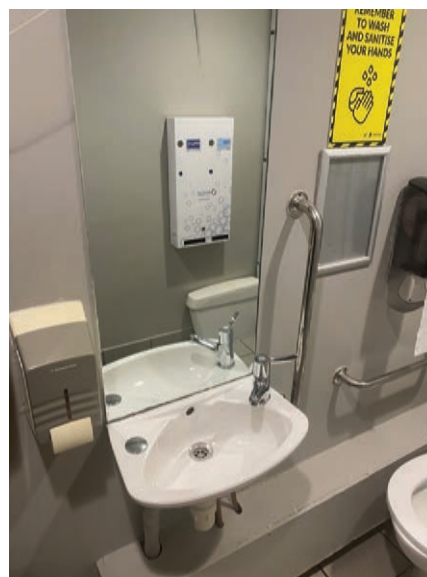
GROUND FLOOR TOILETS



This is the **women's toilets** on the ground floor. It can be noisy due to the hand dryers. For relaxed performances, hand dryers will be switched off.



This is the **men's toilets** on the ground floor. It can be noisy due to the hand dryers. For relaxed performances, hand dryers will be switched off.



These are the **accessible toilets**. For relaxed performances, hand dryers will be switched off.

ENTRANCE TO THE AUDITORIUM



You can enter the auditorium from the main foyer through these doors. Front of House staff will check your ticket and can help you to find your seat.

THE JOHN FIELD ROOM



This is the **John Field Room**.



You can purchase coffee, tea and other drinks here.



If you have a pram or buggy, you can leave it here.



You can leave items like larger bags and coats in the cloakroom. There is no charge for this.



This is the **John Field Room Bar**. It is closed in this picture, but it will be open during your visit. You can purchase snacks, as well as hot and cold drinks here. There may be a queue.

UPPER LEVEL



You can get to the Upper Level via the lift or the stairs in the John Field Room.



This is the Upper Level. There is a bar here, which may be open and serving drinks during your visit.



You can enter the balcony area of the auditorium from the Upper Level through these doors.

UPPER LEVEL TOILETS



This is the **women's toilets** on the upper level. It can be noisy due to the hand dryers. For relaxed performances, hand dryers will be switched off.



This is the **men's toilets** on the mezzanine level. It can be noisy due to the hand dryers. For relaxed performances, hand dryers will be switched off.

THE AUDITORIUM



This is the **auditorium**. There are 1,200 seats, including the balcony seats. For relaxed performances, only 70% of tickets will be on sale, so there will be extra space for those who may need it.



FRONT OF HOUSE STAFF



Front of House staff are always available to assist you. During your visit the Front of House Staff will be wearing NCH T Shirts and Christmas Accessories e.g Hat , Hairbands so you can easily identify them. The Front of House Manager will be available throughout the performance and will be wearing a name badge like this one.

ABOUT THE PERFORMANCE

This Way to Christmas is a performance created by a theatre company called Theatre Lovett. The music for the performance is played by the NCH Christmas Orchestra.

During the first half of the show, Louis Lovett tells stories (including a version of the story of The Little Match Girl), makes jokes, sings songs, and introduces some fun festive characters. You might recognise some of the Christmas songs!

He is joined by dancers, performers and singers as well as the orchestra. The performers are children and adults.

Louis enjoys talking to the audience and he may ask the audience some questions or invite responses.



Here are some images from the first half of *This Way to Christmas*. The stage is decorated with Christmas trees and decorations, and there is a screen above the orchestra which will play a slideshow of festive images during the first half of the performance.



The second half of the performance is a screening of an animated film called *The Snowman*. The film is based on a book called *The Snowman* by Raymond Briggs. It tells the story of a young boy, who awakes to find it has snowed! He spends the day building a snowman, and that night, the snowman comes to life! The snowman takes the boy flying on a magical adventure, where they get to meet many other snow-people and even Santa Claus, who gives the boy a scarf as a present! The next morning, the snowman has melted, and the boy is sad, but also pleased to have had this adventure. He still has his scarf, so that he'll never forget the snowman.

This film doesn't have any dialogue. Music will be played throughout the film by the orchestra. At one moment, there is a song, which will be performed by a boy soprano. The song is called *Walking in the Air* and if you'd like to listen to it in advance you can easily find it online.

Here is an image from the second half of the show when the film is playing.



At the end of the performance there will be a curtain call. The main performers will come back onstage. There will be some dancing and music. Sometimes the audience claps along with the music. The performers will take their final bow.



This is a picture of **Louis Lovett**, wearing his costume. Louis will do most of the talking during the performance and he will let you know what's going to happen next as well as telling some stories and acting.



This is a picture of **Louis Lovett**, not wearing his costume.



This is a picture of **Kévin Coquelard**, our Toy Solider wearing his costume. Kevin will be dancing, interacting with Louis, and creating mischief and fun during the performance!



This is a picture of **Kévin Coquelard**, not wearing his costume.



This is a picture of the orchestra conductor, **Elaine Kelly**. It's her job to make sure all the musicians are playing together. You will see her moving her body a lot. She does this to communicate to the musicians how they should play the music. For example, the rhythm or tempo, and how loudly or softly they should play.



Here are some of the other dancers and performers.



Last but not least, this is a picture of our very special guest, **Santa Claus**, who will be onstage for a few minutes during the first part of the performance. Santa will speak with Louis, and read a message for the audience. He will join the performers for a song, and then he will go back offstage.

MUSIC IN THE PERFORMANCE

1. An adaptation of **Pachelbel's Canon in D**. Look out for hints of the song 'Jingle Bells' in this adaptation of Pachelbel's famous Canon. The Nutcrackers walk onto stage very, very slowly in time with this piece of music.
2. **A Christmas Festival** by Leroy Anderson. Louis and a singer called Simon will sing along with the orchestra on some popular Christmas carols that feature in this piece of music, in particular: 'Deck the halls', 'God rest ye merry gentlemen', 'Hark the herald angels sing' and 'Silent Night'.
3. **The Little Match Girl Fantasy** by Fergus Sheil. Simon sings new lyrics to the tune 'Oíche Úd i mBeithil' (e.g. 'She is the little matchgirl and the world's met its match in she!')
4. **I saw Momma kissing Santa Claus** sung by Louis Lovett. Louis interrupts this song and changes the lyrics from 'last night' to '...1974' and other silly changes.
5. **Let it snow, let it snow, let it snow**. Sung by Shiv.
6. **Santa Claus is coming to town**
7. **Fanfare for the Common Man** by Aaron Copland. Santa Claus enters the stage with this very famous piece of music being played by the orchestra. The Nutcrackers and the toy soldier will be on stage with Santa.
8. **Jingle Bells** will be sung by Santa and everyone on the stage. The audience is invited to join in.
9. **The Snowman** music composed by Howard Blake
10. **Sleigh Ride** by Leroy Anderson – the performance ends with this orchestral music piece and the dancers.

DURATION:

The whole performance lasts one hour.

FOOD AND DRINK

There is no food or drink allowed in the auditorium however personal water bottles are permitted.

WARNINGS:

There are some moments where the lights will change, where the music gets a bit louder or more spooky in mood.

The lighting gets darker when the film starts so that the screen can be seen properly.

There is no strobe lighting and no complete blackouts.

RELAXED PERFORMANCE

This year, we are excited to have a relaxed performance of *This Way to Christmas* on Saturday 16th December at 10.30am. Relaxed performances are designed to take away some of the barriers that can make the traditional theatre-going experience challenging for some people.

For the relaxed performance, we are making some changes to how the performance runs:

- **The auditorium will open a little earlier to allow the audience extra time to get used to being in the space.**
- **We will have extra Front of House staff available to assist if needed.**
- **We will sell a maximum of 70% of the tickets to allow extra space in the auditorium.**
- **The doors will remain open throughout the performance for audience members who need to come and go.**
- **The house lights will remain on at a low intensity throughout the show.**
- **Hand dryers in the bathrooms will be switched off.**
- **Calm zones will be set up and signposted around the building for audience members who may need to take some time out.**
- **The performance will be slightly adapted to avoid possible sensory triggers.**
- **Louis will act as a guide for the audience and will signal when there are particularly loud sounds or sudden lighting effects coming up.**
- **We encourage those who might be sensitive to loud noise to bring and use ear defenders during the performance.**
- **Audience members who need to move around or make sounds in order to self-regulate are free to do so.**
- **We have produced this visual guide so that audience members can know a little bit more about the venue and the show before attending.**
- **At the end of the performance, the auditorium and foyer may be quite busy as everyone exits together and makes their way out of NCH. Please feel free to take your time, and if you need assistance, there will be front of house staff available to help you.**